



HEINZ

PRODUCT SPECIFICATION SHEET

PRODUCT: CHEF FRANCISCO BAJA CHICKEN ENCHILADA

VARIETY NUMBER: 621540 - 78001387

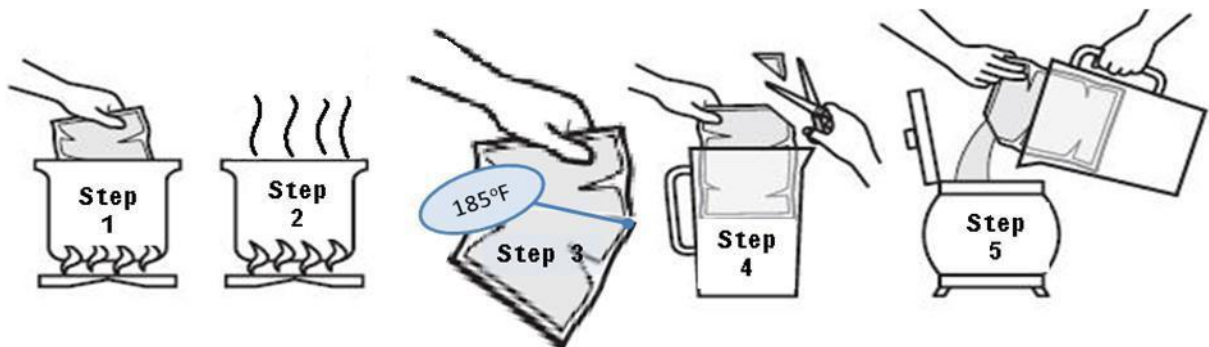
PACKAGE SIZE: 4– 8 LB BAGS PER CASE

PRODUCT DESCRIPTION: We've captured a taste of Mexico by combining chicken, black beans, bell peppers, and exotic spices that will transport you south-of-the-border.

PREPARATION INSTRUCTIONS*:

Boil-in-Bag:

1. CAREFULLY PLACE UNOPENED BAG OF PRODUCT IN BOILING WATER.
2. COOK UNTIL CONTENTS REACH 185°F.
3. CHECK TEMPERATURE BY REMOVING BAG FROM WATER; FOLD THE UNOPENED BAG AROUND A STEMMED THERMOMETER.
4. TRANSFER COOKED PRODUCT TO HOLDING OR SERVING CONTAINER:
 - a. FOR EASIER HANDLING, INSERT POUCH INTO LARGE PITCHER.
 - b. CUT OPEN CORNER OF POUCH OPPOSITE PITCHER HANDLE.
5. CAREFULLY POUR INTO SERVING CONTAINER; HOLD & SERVE AT GREATER THAN 150°F.



FOLLOW THE FDA FOOD CODE FOR HANDLING LEFTOVERS

ANALYTICAL DATA:

Available Upon Request

MICROBIOLOGICAL DATA:

Available Upon Request



CONTAINER PACKAGING:

Container: 8 lb Bag

CONTAINER CODING: Primary Packaging

PP YM DD BBBB TT:TT (Explanation below)

CASE PACKAGING:

Pack/Size: 4/8 lbs.
Case Net Wt: 32 lbs.
Case Gross Wt: 33.05 lbs.
Case Cube: 0.74 cu ft.
Case Size (OD): 14.125 x 8.3125 x 9.925"
Cases/Pallet: 65
Cases/Layer: 13
Layers/Pallet: 5

CASE CODING: Secondary Packaging

Example: PP YM DD TT:TT (Explanation Below)

CODE DESIGNATION

Each case and unit is labeled with a code designation which includes plant location, date of production, batch number and production line.

PPYMDD TT:TT

- P - Plant code** - LD = Cedar Rapids
- Y - Year** - 1 digit (last digit of year)
- M - Month** - 1 alpha (see month code key below)
- D - Day of Month** - 2 digits
- B - Batch Identifier** - 3 digits and 1 alpha
- T - Military Time** - 4 digits w/ colon

Example: For product packed at Cedar Rapids on 07/27/2011 at 2:30 PM would read:

LD 1G27 14:30

Month Code Key (Note: the letter "I" is not used)

- | | |
|--------------|---------------|
| A = January | G = July |
| B = February | H = August |
| C = March | J = September |
| D = April | K = October |
| E = May | L = November |
| F = June | M = December |

STORAGE: *Keep frozen at or below 0°F*

SHELF LIFE: *730 days*



INGREDIENT STATEMENT:

WATER, DICED TOMATOES (TOMATOES, TOMATO JUICE, CITRIC ACID, CALCIUM CHLORIDE), HEAVY CREAM, ONIONS, COOKED DICED WHITE MEAT CHICKEN (WHITE MEAT CHICKEN, WATER, MODIFIED CORNSTARCH, SALT, SODIUM PHOSPHATE), CORN, BLACK BEANS, COOKED DARK MEAT CHICKEN (DARK MEAT CHICKEN, WATER, ISOLATED SOY PROTEIN, SALT, SODIUM PHOSPHATE), BELL PEPPERS (GREEN, RED), GREEN CHILES (GREEN CHILE PEPPERS, CITRIC ACID), ZUCCHINI, CONTAINS 2% OR LESS OF: TOMATO PASTE, SOYBEAN OIL, CHIPOTLE PUREE (DEHYDRATED CHIPOTLE PEPPERS, WATER, SALT, DISTILLED WHITE VINEGAR, CITRIC ACID, SODIUM BENZOATE AND POTASSIUM SORBATE), MODIFIED CORNSTARCH, SALT, CREAM FLAVOR (LACTOSE, WHEY PROTEIN CONCENTRATE [MILK], CREAM POWDER [CREAM, NON-FAT MILK, SOY LECITHIN], MODIFIED CORNSTARCH, MILK FAT, MANNITOL, XANTHAN GUM, ARTIFICIAL COLOR, SALT, NATURAL FLAVORING), COOKED MECHANICALLY SEPARATED CHICKEN, WHEY POWDER (MILK), SUGAR, RENDERED CHICKEN FAT (CHICKEN FAT, NATURAL FLAVORING), SPICES, CHILI POWDER (CHILI PEPPERS, SPICES, SALT, DEHYDRATED GARLIC), CHOPPED GARLIC (WATER, GARLIC, PHOSPHORIC ACID, POTASSIUM SORBATE, XANTHAN GUM, GUAR GUM), CHICKEN BROTH, POTASSIUM CHLORIDE, JALAPENO PEPPERS (JALAPENO PEPPERS, VINEGAR, SALT, CALCIUM CHLORIDE, SODIUM BENZOATE), XANTHAN GUM, HYDROLYZED CORN PROTEIN (CONTAINS SOYBEAN OIL), GARLIC POWDER, VEGETARIAN FLAVOR (POTASSIUM LACTATE, AUTOLYZED YEAST EXTRACT, WATER, NATURAL FLAVORS), CILANTRO, DISTILLED WHITE VINEGAR (WATER, SULFITES), ONION POWDER, EMULSIFIER (DISTILLED MONOGLYCERIDES [SOY], DISTILLED PROPYLENE GLYCOL MONOESTERS [SOY], CITRIC ACID, ASCORBIC ACID), SODIUM STEAROYL LACTYLATE, DISODIUM INOSINATE AND GUANYLATE, GARLIC, FLAVORINGS, TURMERIC, CITRIC ACID.

ALLERGENS: MILK, SOYBEANS



NUTRITIONAL DATA:

Per Serving

Per 100 gram

Nutrition Facts	
Serving Size 1 cup (245g)	
Servings Per Container About 59	
Amount Per Serving	
Calories 250	Calories from Fat 130
% Daily Value*	
Total Fat 15g	23%
Saturated Fat 6g	30%
Trans Fat 0g	
Cholesterol 55mg	18%
Sodium 1060mg	44%
Total Carbohydrate 20g	7%
Dietary Fiber 5g	20%
Sugars 5g	
Protein 10g	
Vitamin A 20%	• Vitamin C 25%
Calcium 8%	• Iron 10%
*Percent Daily Values are based on a 2,000 calorie diet. Your daily values may be higher or lower depending on your calorie needs:	
Calories:	2,000 2,500
Total Fat	Less than 65g 80g
Saturated Fat	Less than 20g 25g
Cholesterol	Less than 300mg 300 mg
Sodium	Less than 2,400mg 2,400mg
Total Carbohydrate	300g 375g
Dietary Fiber	25g 30g
Calories per gram:	
Fat 9 • Carbohydrate 4 • Protein 4	

Nutrient	Amount Per 100g	
Calories	100.87	kcal
Calories from Fat	53.91	kcal
Total Fat	5.99	g
Saturated Fat	2.58	g
Trans Fat	0.16	g
Ash	1.94	g
Cholesterol	21.58	mg
Sodium	432.32	mg
Potassium	246.08	mg
Total Carbohydrate	8.30	g
Dietary Fiber	2.00	g
Sugars	2.10	g
Protein	3.97	g
Vitamin A	402.43	IU
Vitamin C	5.81	mg
Calcium	36.50	mg
Iron	0.91	mg