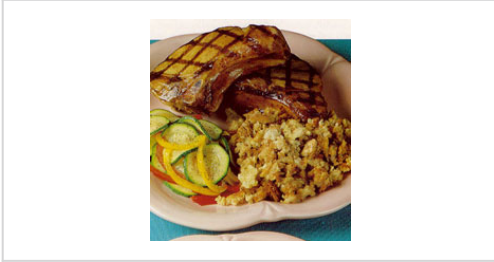


**PEPPERIDGE FARM® HERB STUFFING**



<b>Case Code</b> <b>07392</b>	<b>Pack &amp; Size</b> <b>6/ 32 OZ</b>
----------------------------------	---



Made with specially baked "stuffing bread," and dusted with just the right touch of herbs and spices. It is the ideal complement to your entrées.



**Nutritional Facts**

Serving Size	3/4 CUP (43g/1.5oz)
Amount Per Serving	
Calories 160	Calories from Fat 15
% Daily Value	
<b>Total Fat</b> 1.5g	<b>2%</b>
Saturated Fat 0g	<b>0%</b>
<b>Cholesterol</b> 0mg	<b>0%</b>
<b>Sodium</b> 600mg	<b>25%</b>
<b>Total Carbohydrate</b> 33mg	<b>11%</b>
Dietary Fiber 1g	<b>4%</b>
Sugars 3g	<b>6%</b>
<b>Protein</b> 3g	<b>6%</b>
Vitamin A 0%	Vitamin C 0%
Calcium %	Iron %
Vitamin E 0%	Thiamine 0%
Magnesium 0%	Zinc 0%

\* Percent Daily Values are based on a 2,000 calorie diet.  
 Nutrition Facts are based on our current data.  
 However, because the data may change from time to time, this information may not always be identical to the Nutrition Facts table found on the labels of products.  
 Formula effective date: 07/16/1997  
 Information is true and accurate as of: 08/05/2015

**FEATURES AND BENEFITS**

Large and varied cuts of specialty bread are combined with a unique blend of flavorful herbs and spices. Convenient top-of-stove preparation requires no skilled labor and product is ready to serve in minutes.

**SERVING IDEAS**

For a delicious variation to chicken, fish, pork, and veal! It is also great in casseroles and hors d'oeuvres.

**PREPARATION**

Just add water and butter (optional), or customize to create a signature menu item.

**HANDLING**

COVER AND KEEP WARM (140-160 DEGREES F) UNTIL SERVING. FLUFF STUFFING WITH A FORK BEFORE EATING.

**STORAGE**

Shelf Life: 1 YEAR

Storage Temperature: ROOM TEMPERATURE

**MORE**

Large and varied cuts of specialty bread are combined with a unique blend of flavorful herbs and spices. Convenient top-of-stove preparation requires no skilled labor and product is ready to serve in minutes.

<b>PACKAGING DETAILS</b>			
<b>Pack &amp; Size:</b> 6/ 32 OZ	<b>Case Weight:</b> 13.46 LB	<b>UPC:</b> 14100073925	
	21.875IN x 9IN x		
<b>Cube:</b> 1.339 FT	<b>Case Size:</b> 11.75IN (L x W x H)	<b>SCC-14:</b> 10014100073922	

**OTHER INFORMATION**

An 1.5 oz. portion provides 2.0 oz. of equivalent grains. Non-creditable grains are not above 0.24 ounce equivalent per portion. Please refer to the Formulation Statment for Documenting Grains in School Meals available on Campbell SMART and [www.campbellfoodservice.com](http://www.campbellfoodservice.com)

#### INGREDIENTS

MADE FROM: UNBROMATED UNBLEACHED ENRICHED WHEAT FLOUR (FLOUR, NIACIN, REDUCED IRON, THIAMINE MONONITRATE [VITAMIN B1], RIBOFLAVIN [VITAMIN B2], FOLIC ACID), WHOLE WHEAT FLOUR, SALT, SUGAR, CONTAINS 2 PERCENT OR LESS OF: YEAST, CANOLA OIL, UNSULPHURED MOLASSES, SPICES (CONTAINS CELERY), ONION POWDER, CALCIUM PROPIONATE (TO RETARD SPOILAGE), MALTED BARLEY FLOUR, SOY LECITHIN. CONTAINS: WHEAT, SOY.